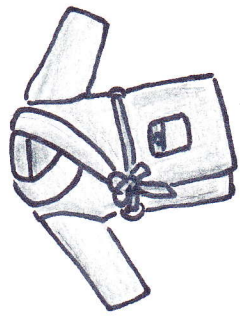
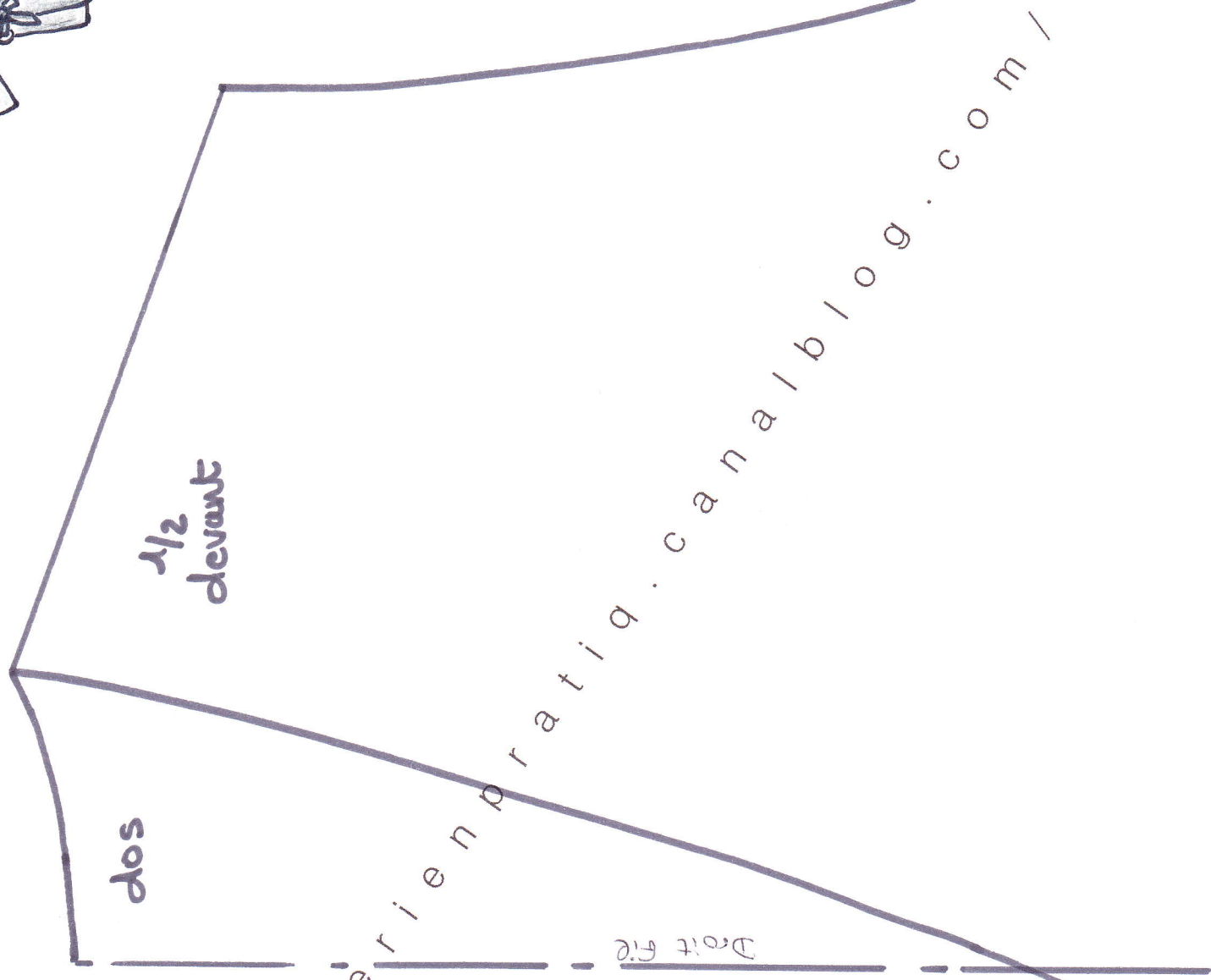


ROBE DE CHAMBRE 24 mois

Matière = laine



PT 04 13
1:1
5cm

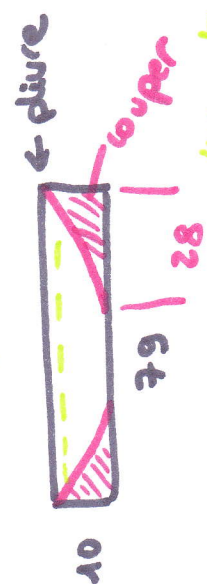


<http://minederienpratique.canalblog.com/>

+ Ceinture



+ Col châle



--- surpiquer en étirant

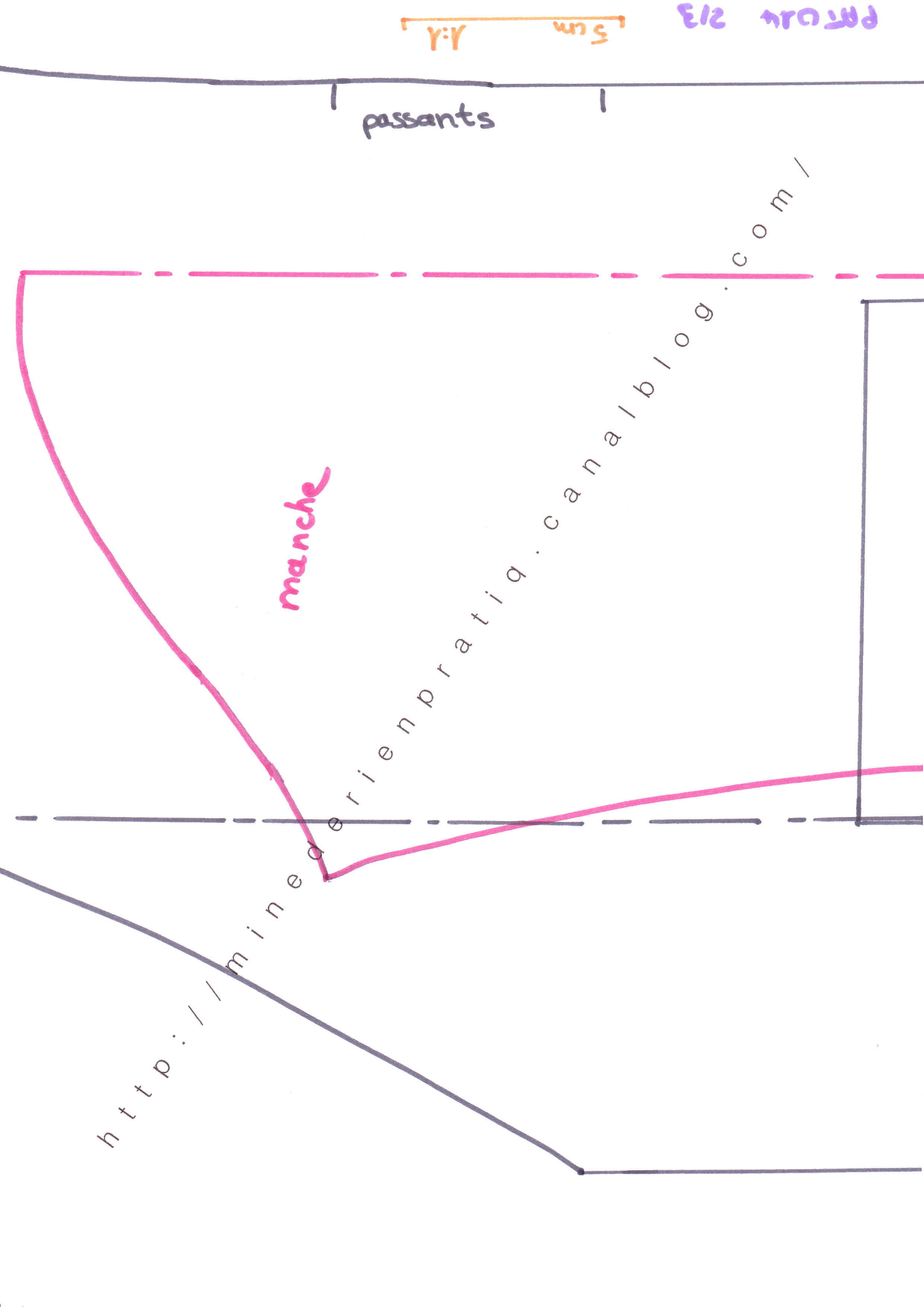
et coudre le bord ouvert par dessus l'intérieur du corps.

5 cm
1:1

passants

manche

<http://mindederienpratique.canalblog.com/>



Poche Plaque

<http://mindedrienpratique.canalblog.com/>