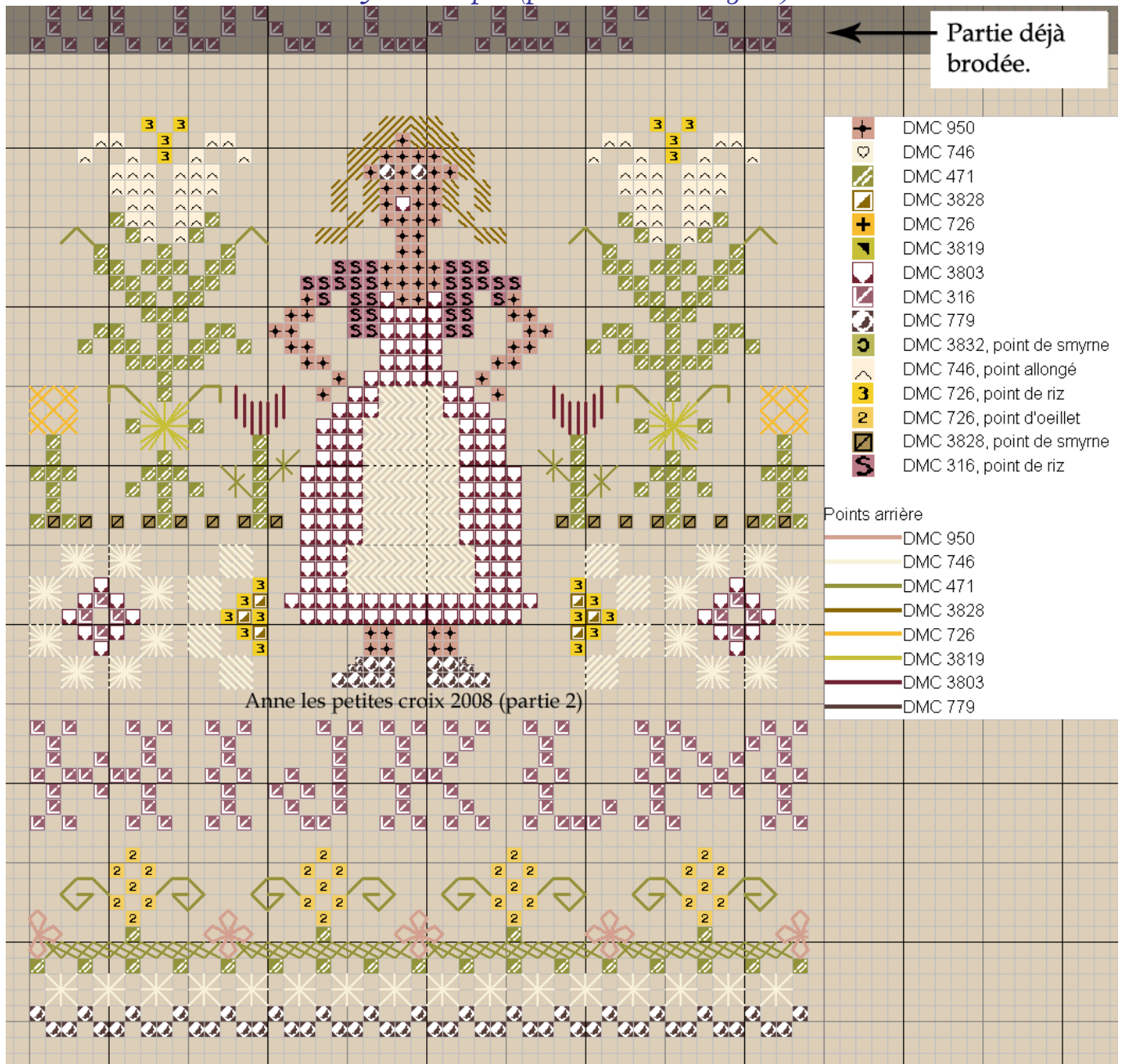


## Mystère sampler (partie 2 version original)



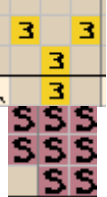
Here is the second part

You need to stitch it after the first part.

Be careful to leave eight fabric threads.

The explanations of the special point start from the top to the bottom following the chart.

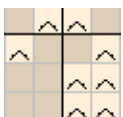
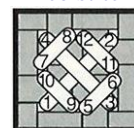
### Explications des points spéciaux :



The pistils of the two large flowers the lady's cardigan, and the design on the shoes.

Rice stitch, 1 strand, see colour chart

### Rice stitch



The petals of the same flowers long cross stitch, 1 strand DMC n°746.

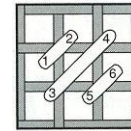
### Oblong cross stitch





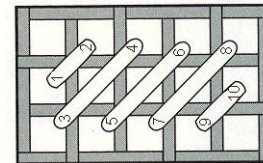
The lady's hairs.  
Mosaic stitch DMC 3828. Follow the stitches way on the diagram.

### Mosaic point



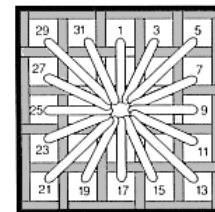
The lady's apron, cachemere stitch  
,1strand DMC 746. Follow the stitches the way indicated on the diagram.

### Cachemere point



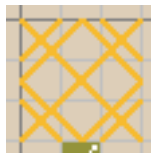
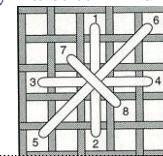
The eyelet stitch in on the two big flowers stems, 1 strand n°3819.  
Pull your thread a little, you need a small hole in the middle.  
*Be careful. Do this stitch on 6 fabric thread not on 4 like shown on the right*

### Eyelet stitch



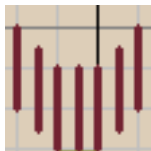
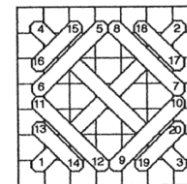
Smyrna stitch in diagonal .  
They are the leaves close to the lady on each side.  
You need 1 strand n° 471.

### Smyrna stitch in diagonal



Double rice stitch, you need 1 strand n°726.

### Double rice stitch



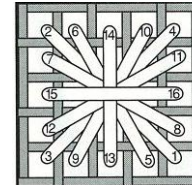
Satin stitch, you need 2 strand n° 3803.  
Follow the diagram.

### Satin stitch



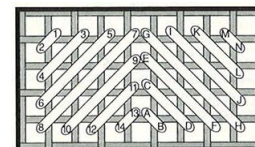
Double leviathan stitch need1 strand DMC n°746.

### Double leviathan stitch



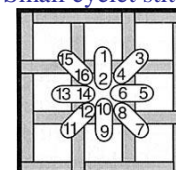
Satin cushion stitch need 1 strand DMC n°746.  
Be careful to follow the diagram's way.

### Satin cushion stitch



Small eyelet stitch need 1 strand n°726. Pull your thread a little so that a small hole can appear.

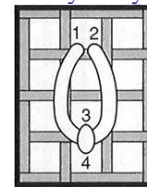
### Small eyelet stitch





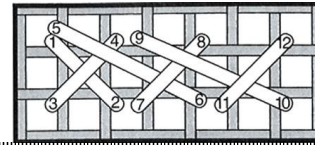
You need 1 strand n°950 to stitch the lazy daisy.  
Start in the center to stitch four petals.

Lazy daizy



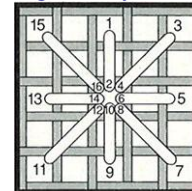
Double back stitch is with 1 thread DMC n° 471.

Double back stitch

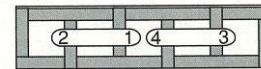


Algerian eye stitch DMC n°746.  
Pull a little on the thread so that a hole can appear at the center.

Algerian eye stitch



Back stitch.  
All the stitches are back stitch on the stems, flower's leaves 1 strand DMC n° 471.



*Here is for the second part .  
Anne R, Tournicoton.*