

Sky is the Limit Shawl

Material:

1 ball of [Zauber Flower Schoppel Wolle](#),
needles 3,5mm.

Cissors, row counter, tapestry needle, blocking kit or pins.

Abbreviations:

k : knit

K2tog : knit 2 together.

p: purl

SKP : slip the first stitch knitwise, knit the next stitch and pass over the slip stitch.

SK2P : slip the first stitch knitwise, knit 2 next stitches together and pass over the slip stitch.

Yo : Yarn Over

m1 : make one stitch : knit the stitch once through the front strand and once through the back strand, you can see this [vidéo](#).

st: stitch

R : row

Points :

T : side braid, [see this vidéo](#)

Garner stitch : knit every stitches of every rows.

l-cord: take one stitch at the end of the side braid row and then put the last two stitches of the right needle on the left needle. Knit these 3 sts i, do not turn the work and put them back on the left needle, knit them again and put them back on the left needle. Repeat this process a total of 5 times, and after the 5th repeat, put the 3 stitches back on the left needle and start knitting the leaf. You can also [have a look on this vidéo](#).

Lace leaf:

R 1 (right side row) : m1, k1, m1. (5 sts)

R 2 (wrong side row), and all the wrong side rows including 16, purl every stitches.

R 3: k2, Yo, k1, Yo, k2.(7sts)

R 5 : k3, Yo, k1, Yo, k3. (9sts)

R 7 : k4, Yo, k1, Yo, k4. (11 sts)

R 9 : SKP, k7, K2tog.(9 sts)

R 11 : SKP, k5, K2tog.(7sts)

R 13 : SKP, k3, K2tog.(5 sts)



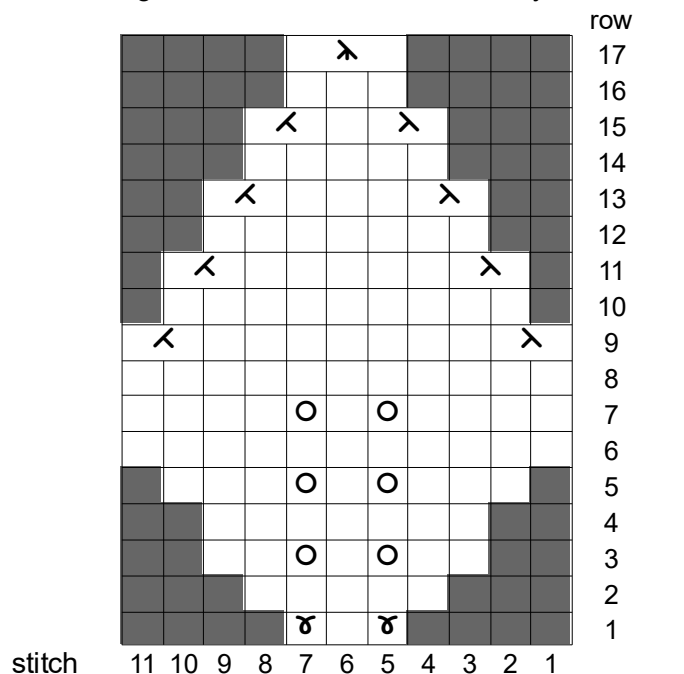
R 15 : SKP, k1, K2tog.(3 sts)

R 17 : SK2P.

Then, cut the thread to 10 cm, pass it in the last stitch to stop it and take back the knitting as indicated.

If necessary, look at the diagram or [see this vidéo.](#)

Diagram of the lace leaf, Shawl Sky is the limit



■	nonexistent stitch
□	knit on right side, purl on wrong side row
○	yarn over
↘	SKP
↗	SK2P
↙	K2tog
⌘	m1

Recommendations:

Bring in your threads as your work progresses, it will be much less tedious than doing it in full at the end.

The blocking is necessary to give his full measure to this work: provide you pins or a blocking kit, give the shawl a form of right triangle. To block leaves and i-cords: put a pin at the base of the i-cord, then one at the top of the leaf, and two at the widest sides of the leaf.

For the blocking of the edge, with a huge number of leaves, I advise you to proceed in two steps: you first block the leaves with a i-cord of 2 rows, and then after they took well the form wanted, you block the leaves with i-cords of 7 rows.

Work:

All knitting is in garter stitch, except for side braids and leaves.

Cast on 1 st, knit a row and knit the wrong side row.

Then, on the right side row m1, which gives two stitches, make the wrong side row by knitting these two stitches.

Knit a right side row and a wrong side row.

Then repeat the following pattern:

Row 1 (right side row): Knit all sts and make m1 in the last stitch, adding a stitch to the work.

Rows 2, 3 and 4: Knit all sts.

Repeat this pattern of 4 rows until you have 15 stitches on your needle.

On the right side row, make a side braid, followed by an i-cord and a leaf.

To make wrong side row (you will have 13 stitches on your needle, since 2 were used in the l-cod), take the yarn, and make a wrong side row as usual by knitting your stitches and repeat the pattern of 4 basic ranks:

Row 1 (place): Knit all stitches in place and make m1 in the last stitch, adding a stitch to the piece.

Rows 2, 3 and 4: Knit all sts.

Repeat this pattern of 4 rows until you have 30 stitches on your needle.

On the right side row, make a side braid, followed by an i-cord and a leaf.

Knit wrong side row (you will have 28 stitches on your needle, since 2 were used in the l-cod), and repeat the pattern of 4 basic ranks:

Row 1 (place): Knit all stitches in place and make m1 in the last stitch, adding a stitch to the piece.

Rows 2, 3 and 4: Knit all sts.

Repeat this pattern of 4 rows until you have 45 stitches on your needle.

On the right side row, make a side braid, followed by an i-cord and a leaf.

Knit wrong side row (you will have 43 stitches on your needle, since 2 were used in the l-cod), and repeat the pattern of 4 basic ranks:

Row 1 (place): Knit all stitches in place and make m1 in the last stitch, adding a stitch to the piece.

Rows 2, 3 and 4: Knit all sts.

Repeat this pattern of 4 rows until you have 60 stitches on your needle.

On the right side row, make a side braid, followed by an i-cord and a leaf.

Knit wrong side row (you will have 58 stitches on your needle, since 2 were used in the l-cod), and repeat the pattern of 4 basic ranks:

Row 1 (place): Knit all stitches in place and make m1 in the last stitch, adding a stitch to the piece.

Rows 2, 3 and 4: Knit all sts.

Repeat this pattern of 4 rows until you have 75 stitches on your needle.

On the right side row, make a side braid, followed by an i-cord and a leaf.

Knit wrong side row (you will have 73 stitches on your needle, since 2 were used in the l-cod), and repeat the pattern of 4 basic ranks:

Row 1 (place): Knit all stitches in place and make m1 in the last stitch, adding a stitch to the piece.

Rows 2, 3 and 4: Knit all sts.

Repeat this pattern of 4 rows until you have 90 stitches on your needle.

On the right side row, make a side braid, followed by an i-cord and a leaf.

Knit wrong side row (you will have 88 stitches on your needle, since 2 were used in the l-cod), and repeat the pattern of 4 basic ranks:

Row 1 (place): Knit all stitches in place and make m1 in the last stitch, adding a stitch to the piece.

Rows 2, 3 and 4: Knit all sts.

Repeat this pattern of 4 rows until you have 105 stitches on your needle.

Edge :

Repeat 5 times these two rows :

right side row : side braid

wrong side row : knit all sts.

Then knit the leaves on the right side row:

On the first 3 stitches of row, make an i-cord of 2 rows then make the leaf, then take the next 3 stitches and make an i-cord of 7 rows and make the leaf.

Repeat this alternation of leaves (with i-cord of 2 or 7 rows) until the end of the row.

Pattern Camille Delahaie- les aiguilles de camille.com

*Any commercial use of this pattern and its achievements are prohibited,
unless prior written consent of the author.*